

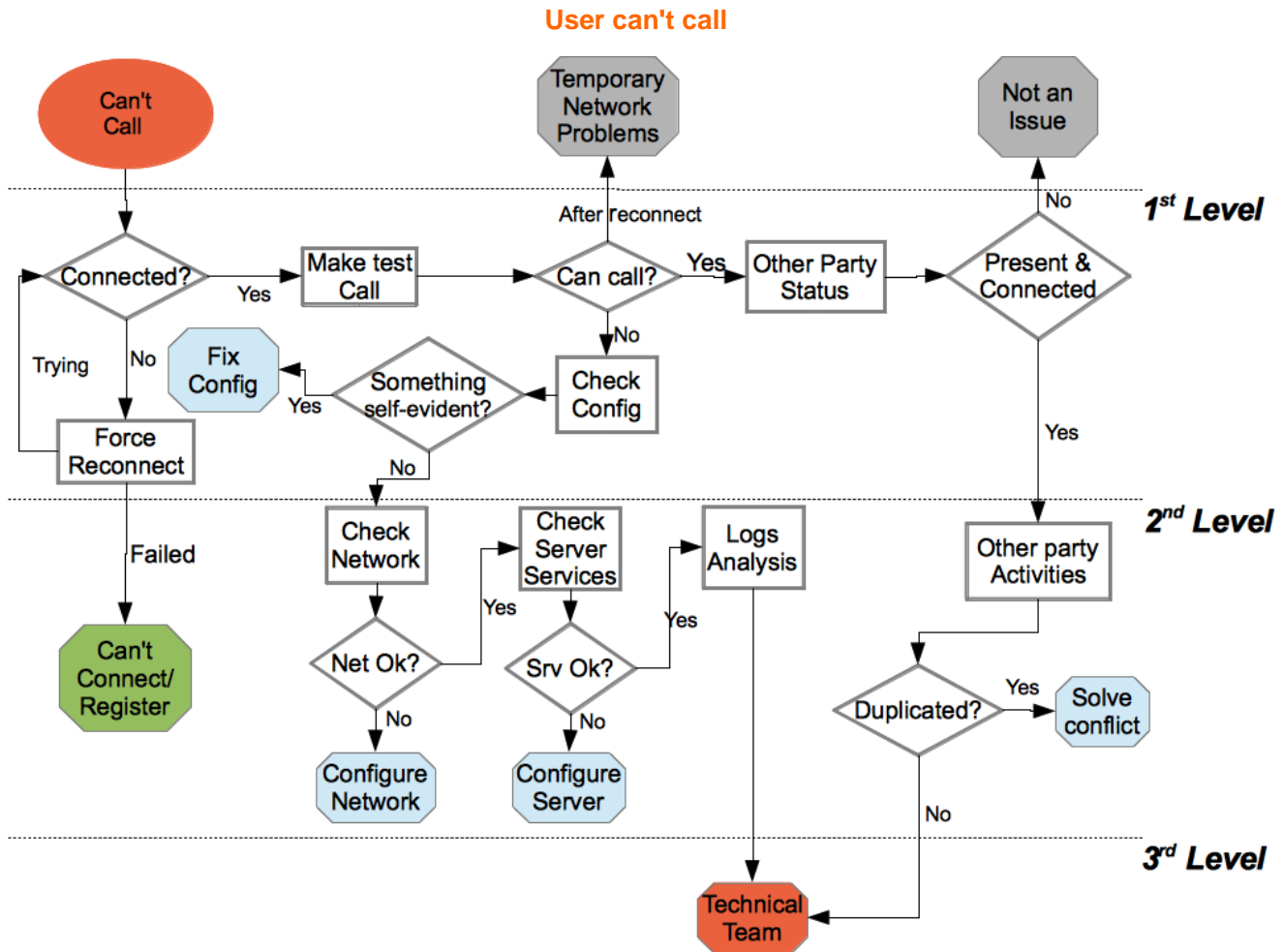
User can't call - professional

Introduction

This is one of the most claimed incidents to occur. This Incident troubleshooting must be confronted only if the incident definition and description hasn't pointed out any operational requirements violation. "User can't call" cause is equally divided into client/server **misconfigurations** and **connection** issues.



Please note that this troubleshooting workflow only applies if no specific error messages are written by the PrivateWave (e.g. License problems, user offline or doesn't exist, etc...).



First Level

We check the connection on the PrivateWave side is fine: [check the connection status](#) declared by the application. After we record the connection status, we perform a [App - Force Manual Reconnection](#) to make sure that the connection action is correctly triggered and thus we can collect answer by the client. If the connection has some problem, then we move to the [Connection Issues troubleshooting](#). If the connection proceeds fine or was declared all right then is possible that the User experienced a Temporary Network Problem which could be over.

To test the actual Incident status first of all we ask the User to [make a test call](#).

If the call fails, first [check that the PrivateWave configurations are correct](#) and if not, fix them and close the Incident. If they are fine, let's [escalate](#) to the second level

If PrivateWave reconnects to perform the test call, then most probably we had a Temporary Network Problem issue. Let's check if the User can call other party now, if he (she) can then close the incident. If the User still can't call then check that the other device is connected and registered and if it doesn't, close the incident as "Not an issue".

If the other party is connected and registered then [escalate](#) to the second level.

Second Level

We can receive an escalation request either for a User's remote party configuration check or for a PrivateServer status check.

In the former case we have to check the User's remote party activities on the server in order to discover some conflict, such as a virtual number duplication and eventually try to solve the conflicts.

In the latter case we need to perform some tests on the PrivateServer status: [Network](#) and [PSAM 3.3 Check Server Services](#).

If all of the above are fine, the final possibility of a bug in the client become feasible, thus we check the [client logs](#) and then we escalate to the third level.